

# TUBULAR BRAIDED SLEEVE

## APPLICATIONS

- EMI shielding
- Mechanical protection
- Grounding

## CHARACTERISTICS

Highly flexible braided sleeves with high expansion behavior and tighten fit on harnesses.

## COMPOSITION

Braided sleeves made of tin plated copper wires 0.10, 0.15, 0.20, 0.25 or 0.30mm

## STANDARDS

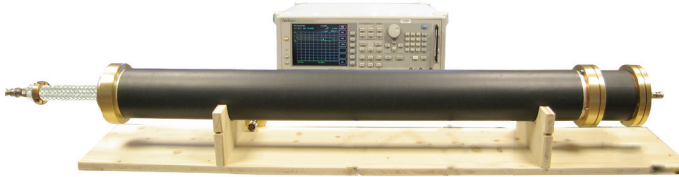
Copper wires in accordance with NF EN 13602

## VARIANTS

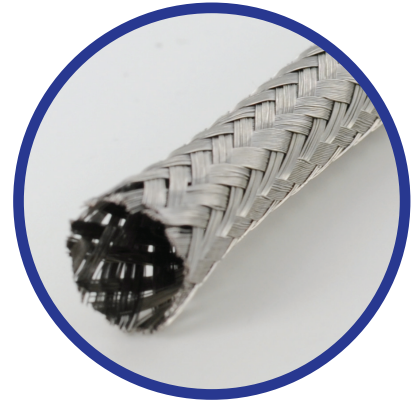
- Other material upon request (nickel plated copper)
- Other diameter upon request
- Over-braiding on harnesses
- High performance shielding upon request. EMC tests capabilities in house or external laboratory

## PACKAGING

Braided on plastic former or without, delivered in reels, coils, drums



Transfer impedance measurement by triaxial method according to NF EN 50289-1-6 upon request.



REF	Nominal diameter mm	Cross section mm <sup>2</sup>	Ø Wires mm	Nominal wall thickness mm	Approx. linear mass gr/m
GTTCE04-10	4	0,4	0,10	0,4	4
GTTCE03-10	3	0,5	0,10	0,4	4
GTTCE03-15	3	1,3	0,15	0,6	12
GTTCE04-15	4	1,7	0,15	0,6	15
GTTCE05-15	5	2,6	0,15	0,6	23
GTTCE06-20	6	4,5	0,20	0,8	40
GTTCE08-20	8	6	0,20	0,8	53
GTTCE10-20	10	7	0,20	0,8	62
GTTCE12-20	12	9	0,20	0,8	80
GTTCE15-25	15	12,5	0,25	1	111
GTTCE20-25	20	15,2	0,25	1	142
GTTCE25-25	25	21,6	0,25	1	192
GTTCE30-25	30	26	0,25	1	314